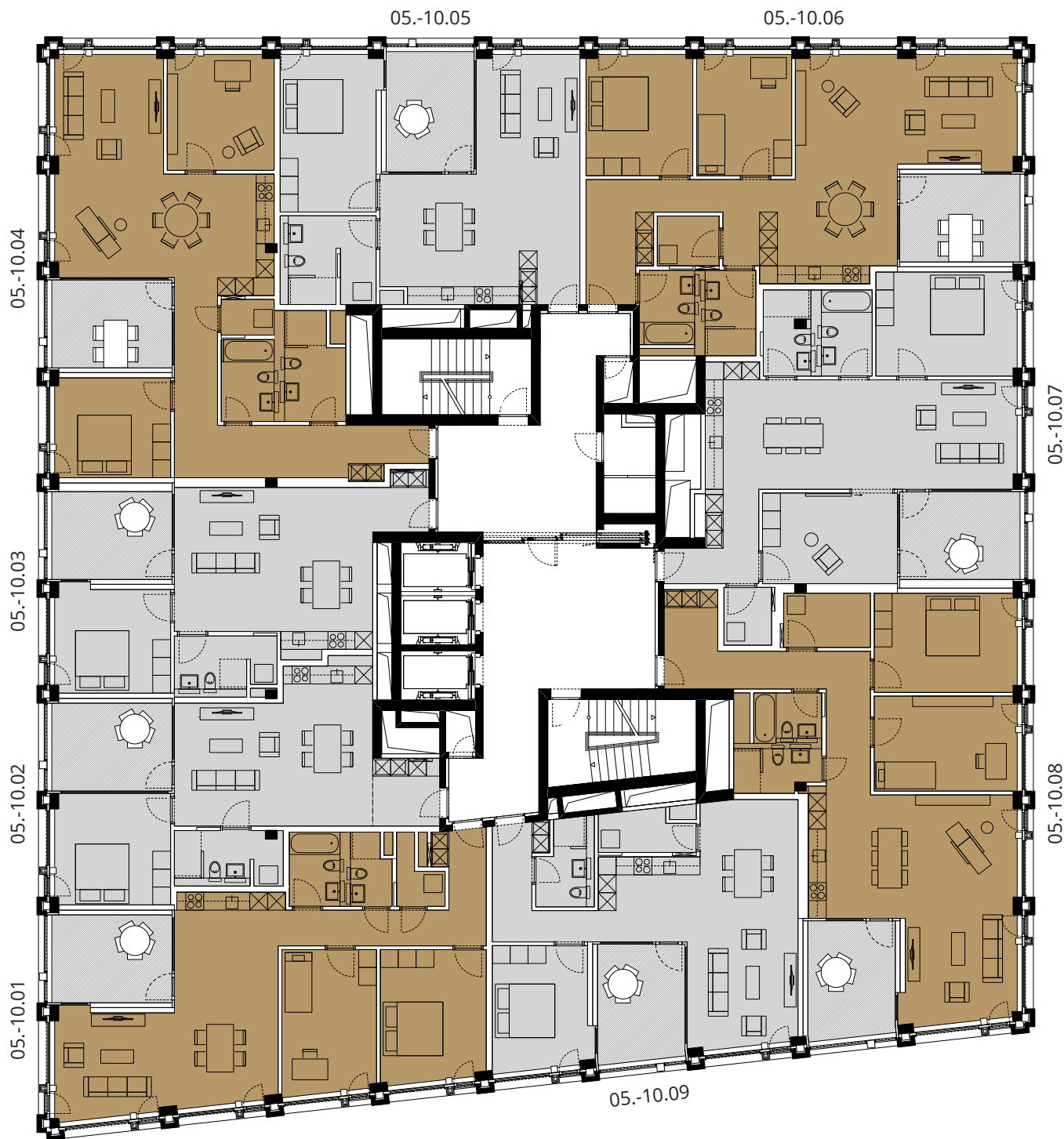


CENTURION TOWER

CAMPUS · BRÜGG-WINDISCH

5.-10. Obergeschoss



05.-10.01	3.5 Zi-Whg.
05.-10.02	2.5 Zi-Whg.
05.-10.03	2.5 Zi-Whg.
05.-10.04	3.5 Zi-Whg.
05.-10.05	2.5 Zi-Whg.
05.-10.06	3.5 Zi-Whg.
05.-10.07	3.5 Zi-Whg.
05.-10.08	3.5 Zi-Whg.
05.-10.09	2.5 Zi-Whg.

Grundrisse sind provisorisch!

Markstein AG, Baden
Telefon 056 203 50 50
baden@markstein.ch
www.markstein.ch

